



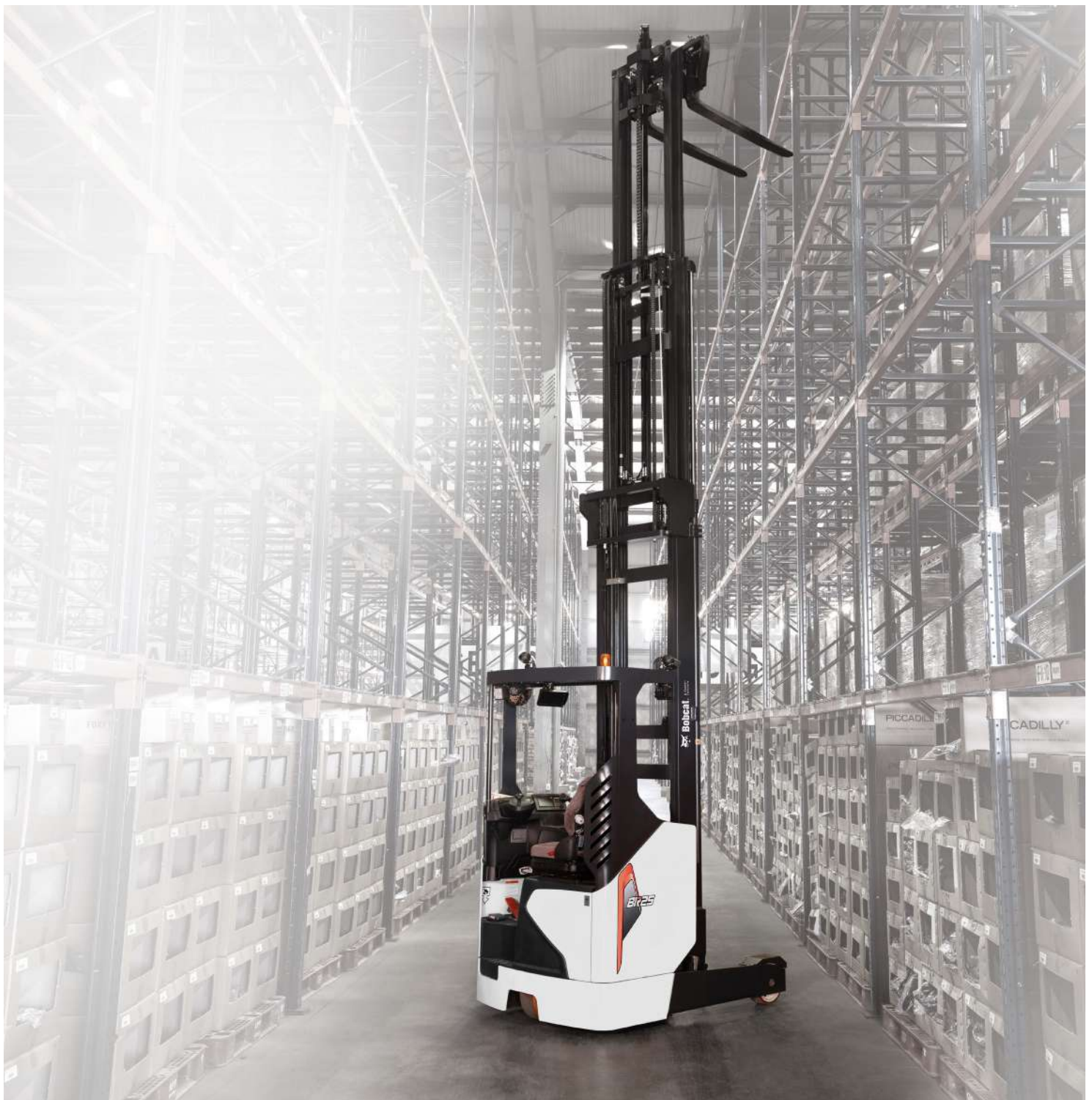
**Bobcat**<sup>®</sup>

*One Tough Animal.*

# ELECTRIC REACH TRUCK

9 series, 1.4 to 5.5 ton capacity

BR14JW-9 / BR16JW-9 / BR20JW-9 / BR25JW-9 / BR14J-9 / BR16J-9



# ONE TOUGH ANNUM

---

► **OUR MISSION**

We empower operators to accomplish more, while working in the toughest conditions and tightest situations. When our customers have the will, we provide the way.

# INTRODUCTION



## ► BOBCAT'S HISTORY

In 1958, Melroe Manufacturing Company introduced a compact front-end loader that evolved quickly into the M400, the world's first true skid steer loader. The company soon adopted what became the world-famous 'Bobcat' brand – and its success paved the way for the global compact equipment industry we know today.

## ► YEARS OF EXPERIENCE

In 2021, Bobcat expanded its portfolio by acquiring Bobcat Industrial Vehicle. This specialist in material handling equipment constructed its first forklift in 1968 and went on to establish a global presence with 400 dealers in 93 countries.



## ► BOBCAT TODAY

Bobcat is expanding its portfolio with the addition of forklifts and reach trucks for the material handling industry. Offering a comprehensive line-up that will meet all your intralogistics needs. Bobcat forklifts and reach trucks are produced in our factory in Korea and China, while our premium quality warehouse equipment is made in Germany.



# H

# A L

# TOUGH, AGILE & SAFE

## ▶ THE 9 SERIES ELECTRIC REACH TRUCK WITH OPTIMIZED MAST OPERATING SENSITIVITY

Doosan bobcat combines the best control and driver convenience with differentiated features to achieve customer satisfaction providing the highest productivity and convenience in various applications.



### ▶ OUTSTANDING PRODUCTIVITY

9 Series reach truck reborn with high performance. High travel speed & High lifting / lowering speed bring you innovative productivity. Compact size of truck and visibility will allow you quick operation. **P 6-7**



### ▶ SMART CONTROL ENHANCED STABILITY

9 Series reach truck enables stable mast operating by optimizing the control valve and mast cushioning. **P 8-9**

GSS (Guardian Stability System) will protect you from un-expected operation mistake.

Vibration comes to a stop 40% faster than before.

Stability makes 1t residual capacity at 13m mast

Visibility through the OVHG

User Friendly Interior

Easy Maintenance



#### ► COMFORT&CONTROLS

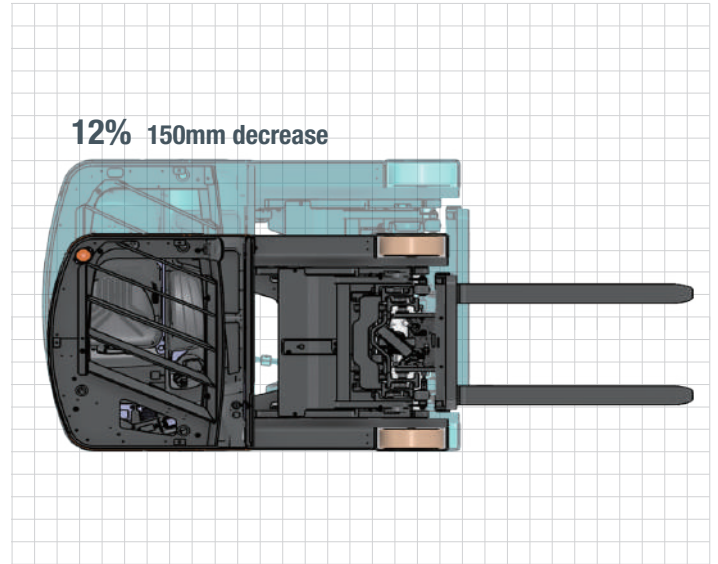
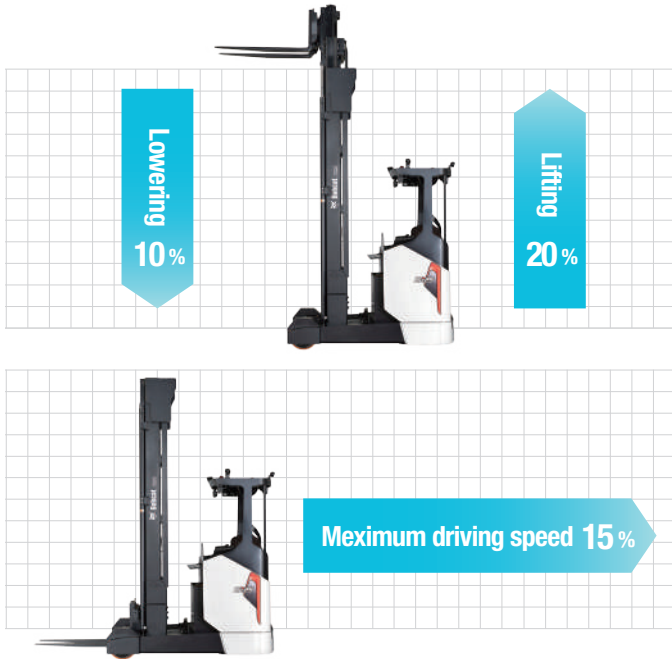
The various convenience features are equipped as standard, providing more Comfortable working environment with less fatigue.  
**P 10**



#### ► SPECIFICATIONS

Doosan Bobcat 9 SERIES Electric reach truck's specifications  
**P 11**

# OUTSTANDING PRODUCTIVITY

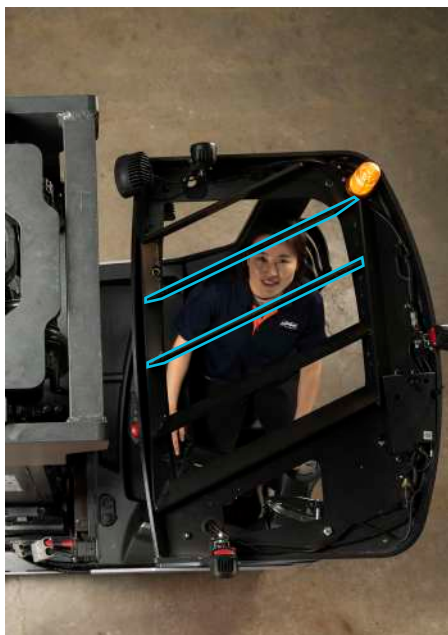


## ▶ QUICK DRIVE QUICK MAST

15% increased quick driving  
 10% increased quick Lowering  
 20% increased quick Lifting  
 Make more productivity

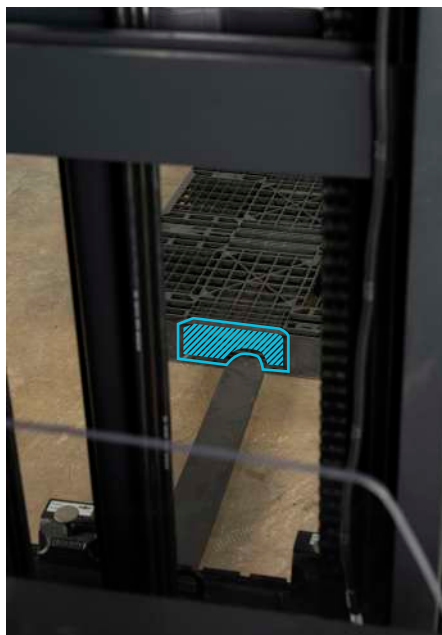
## ▶ COMPACT LINE-UP

Narrow width, Short length make shorter turning radius.  
 Operator easily enter or escape narrow aisle with fast speed.



## ▶ VISIBILITY

Through the OVHG



Through the mast



Beside the mast



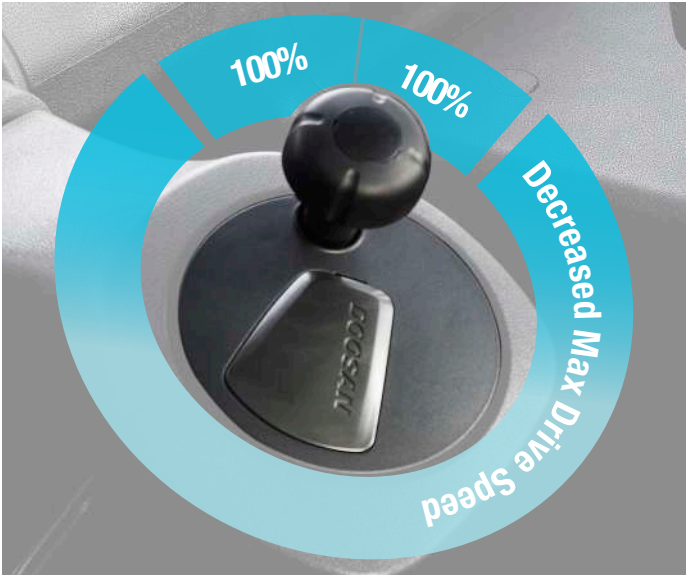




# SMART CONTROL ENHANCED STABILITY



**THERE'S NO TIME FOR DOWNTIME. STAND UP TO EVERY TASK THAT COMES YOUR WAY. DAY AFTER DAY.**

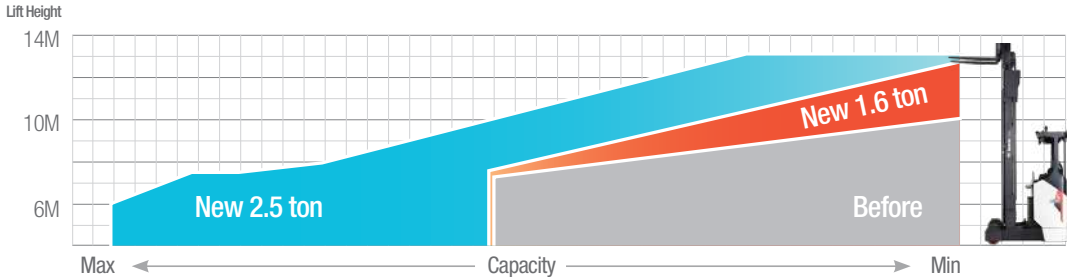


**▶ MAST STABILITY**

An expert task force comprising of a Structure Engineer, Hydraulic Engineer, Electric Control Engineer and Vibration Engineer has helped to develop a truck that is safer and quicker to operate. Vibration comes to a stop 40% faster than before.

**▶ GSS CONTROL**

Doosan bobcat GSS (Guardian Stability System) will protect you from un-expected operation mistake. Smart control alerts you of danger and reduces speed automatically.



**▶ HIGH CAPACITY**

Smart sensor control provides greater stability. Stability makes 1t residual capacity at 13m mast.  
\* BR25JW-9 chassis

# COMFORT & CONTROLS



## ▶ EXTENDED OPTIONS

Optimize operation through; roof top glass, fork camera, laser indicator, finger tip control and joystick.



## ▶ USER FRIENDLY INTERIOR

Highly considered interior design provides you large and variable storage space. Ergonomic design also allows you comfortable operating position.



## ▶ EASY MAINTENANCE

9 Series selected powerful PM (Permanent Magnet) Motor.  
Operating time of 9 series is at least 5~10% more according to driving type.

## ▶ NEW LINE-UP

Narrow and heavy type added to line up.  
Reinforced STD model.  
You can experience optimized model for your warehouse.

# SPECIFICATIONS

## SPECIFICATIONS BR14J-9 / BR16J-9 / BR14JW-9

Manufacturer		Bobcat	Bobcat	Bobcat	Bobcat	Bobcat	Bobcat	Bobcat	Bobcat	Bobcat
		BR14J-9	BR14J-9	BR14J-9	BR16J-9	BR16J-9	BR16J-9	BR14JW-9	BR14JW-9	BR14JW-9
		315AH	465AH	620AH	315AH	465AH	620AH	420AH	560AH	700AH
Load capacity	Q (kg)	1,250	1,400	1,400	1,250	1,600	1,600	1,400	1,400	1,400
Load centre	c (mm)	600	600	600	600	600	600	600	600	600
Wheelbase	y (mm)	1,390	1,390	1,390	1,410	1,410	1,410	1,410	1,410	1,410
Reach distance	l4 (mm)	426	426	361	441	441	376	503	438	368
Aisle width for pallets 1000x1200 wide	Ast (mm)	2,808	2,808	2,860	2,815	2,815	2,867	2,771	2,822	2,878
Aisle width for pallets 1000x1200 long	Ast (mm)	2,925	2,925	2,983	2,931	2,931	2,989	2,881	2,938	3,001
Aisle width for pallets 800x1200 wide	Ast (mm)	2,657	2,657	2,704	2,666	2,666	2,713	2,629	2,673	2,723
Aisle width for pallets 800x1200 long	Ast (mm)	2,883	2,883	2,944	2,889	2,889	2,949	2,836	2,896	2,961
Turning radius	Wa (mm)	1,616	1,616	1,616	1,636	1,636	1,636	1,640	1,640	1,640
Travel speed, load/unload	km/h	14/14	14/14	14/14	14/14	14/14	14/14	14/14	14/14	14/14
Lift speed, load/unload	m/s	0.42/0.6	0.42/0.6	0.42/0.6	0.42/0.6	0.42/0.6	0.42/0.6	0.42/0.6	0.42/0.6	0.42/0.6
Lowering speed, load/unload	m/s	0.55/0.55	0.55/0.55	0.55/0.55	0.55/0.55	0.55/0.55	0.55/0.55	0.55/0.55	0.55/0.55	0.55/0.55
Max. gradeability, load/unload	%	10/15	10/15	10/15	10/15	10/15	10/15	10/15	10/15	10/15

## SPECIFICATIONS BR16JW-9 / BR20JW-9 / BR25JW-9

Manufacturer		Bobcat	Bobcat	Bobcat	Bobcat	Bobcat	Bobcat	Bobcat	Bobcat	Bobcat
		BR16JW-9	BR16JW-9	BR16JW-9	BR20JW-9	BR20JW-9	BR20JW-9	BR25JW-9	BR25JW-9	BR25JW-9
		420AH	560AH	700AH	700AH	775AH	930AH	700AH	775AH	930AH
Load capacity	Q (kg)	1600	1600	1600	2000	2000	2000	2400	2400	2450
Load centre	c (mm)	600	600	600	600	600	600	600	600	600
Wheelbase	y (mm)	1,430	1,430	1,430	1,520	1,520	1,520	1,640	1,640	1,640
Reach distance	l4 (mm)	523	458	388	418	361	361	538	463	463
Aisle width for pallets 1000x1200 wide	Ast (mm)	2,776	2,826	2,882	2,960	3,006	3,006	2,987	3,044	3,044
Aisle width for pallets 1000x1200 long	Ast (mm)	2,883	2,940	3,003	3,078	3,130	3,130	3,092	3,158	3,158
Aisle width for pallets 800x1200 wide	Ast (mm)	2,636	2,679	2,728	2,808	2,850	2,850	2,048	2,897	2,897
Aisle width for pallets 800x1200 long	Ast (mm)	2,838	2,898	2,963	3,037	3,090	3,090	3,047	3,116	3,116
Turning radius	Wa (mm)	1,660	1,660	1,660	1,758	1,758	1,758	1,878	1,878	1,878
Travel speed, load/unload	km/h	14/14	14/14	14/14	14/14	14/14	14/14	14/14	14/14	14/14
Lift speed, load/unload	m/s	0.42/0.6	0.42/0.6	0.42/0.6	0.37/0.65	0.37/0.65	0.37/0.65	0.37/0.65	0.37/0.65	0.37/0.65
Lowering speed, load/unload	m/s	0.55/0.55	0.55/0.55	0.55/0.55	0.55/0.55	0.55/0.55	0.55/0.55	0.55/0.55	0.55/0.55	0.55/0.55
Max. gradeability, load/unload	%	10/15	10/15	10/15	7/11	7/11	7/11	7/11	7/11	7/11



BR20/25JW-9  
Heavy type

BR14/16J-9  
Narrow type

BR14/16JW-9  
Standard type

# YOUR TRUSTED BUSINESS PARTNER

Your machine builds your business and reputation. Everything we put into Bobcat equipment is designed to make this possible. Strength, versatility, or agility, it's built around you.



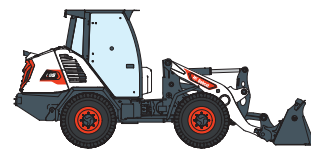
145 MACHINES / 46 PRODUCT FAMILIES / 1 TOUGH ANIMAL



SKID-STEER LOADERS



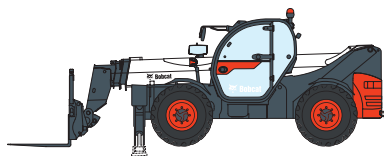
COMPACT TRACK LOADERS



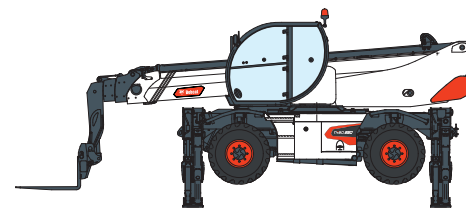
COMPACT WHEEL LOADERS



FORKLIFTS



TELEHANDLERS



ROTARY TELEHANDLERS



LIGHT COMPACTION EQUIPMENT



COMPACT EXCAVATORS



COMPACT TRACTORS



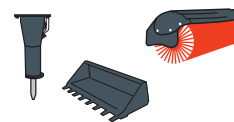
SMALL ARTICULATED LOADERS



MINI TRACK LOADER



MOWERS



ATTACHMENTS

**DOOSAN**

Bobcat is a Doosan Company. Doosan is a global leader in construction equipment, power & water solutions, engines, and engineering proudly serving customers and communities for more than a century. | Bobcat and the Bobcat logo are registered trademarks of Bobcat Company in the United States and various other countries. ©2024 Bobcat Company. All Rights Reserved.

Doosan Bobcat Korea Co., Ltd.

[www.bobcat.com](http://www.bobcat.com)

©2024 BOBCAT



**Bobcat**®