



Bobcat[®]

One Tough Animal[®]

DIESEL FORKLIFTS

9-Series, 10.0 to 16.0 ton load center 600mm, 16.0 ton load center 1200mm capacity EU Stage5, EPA Tier4

D100S-9 / D120S-9 / D140S-9 / D160S-9 / DV160S-9



ONE TOUGH ANIMAL

OUR MISSION

We empower operators to accomplish more, while working in the toughest conditions and tightest situations. When our customers have the will, we provide the way.

INTRODUCTION



BOBCAT'S HISTORY

In 1958, Melroe Manufacturing Company introduced a compact front-end loader that evolved quickly into the M400, the world's first true skid steer loader. The company soon adopted what became the world-famous 'Bobcat' brand – and its success paved the way for the global compact equipment industry we know today.

YEARS OF EXPERIENCE

In 2021, Bobcat furthered its reach by acquiring Doosan Industrial Vehicle, increasing its capacity to provide customers with comprehensive business solutions. With Doosan's expertise in material handling and warehouse equipment dating back to its inaugural forklift in 1968, the company has established a global presence, with 400 dealers across 93 countries.



BOBCAT TODAY

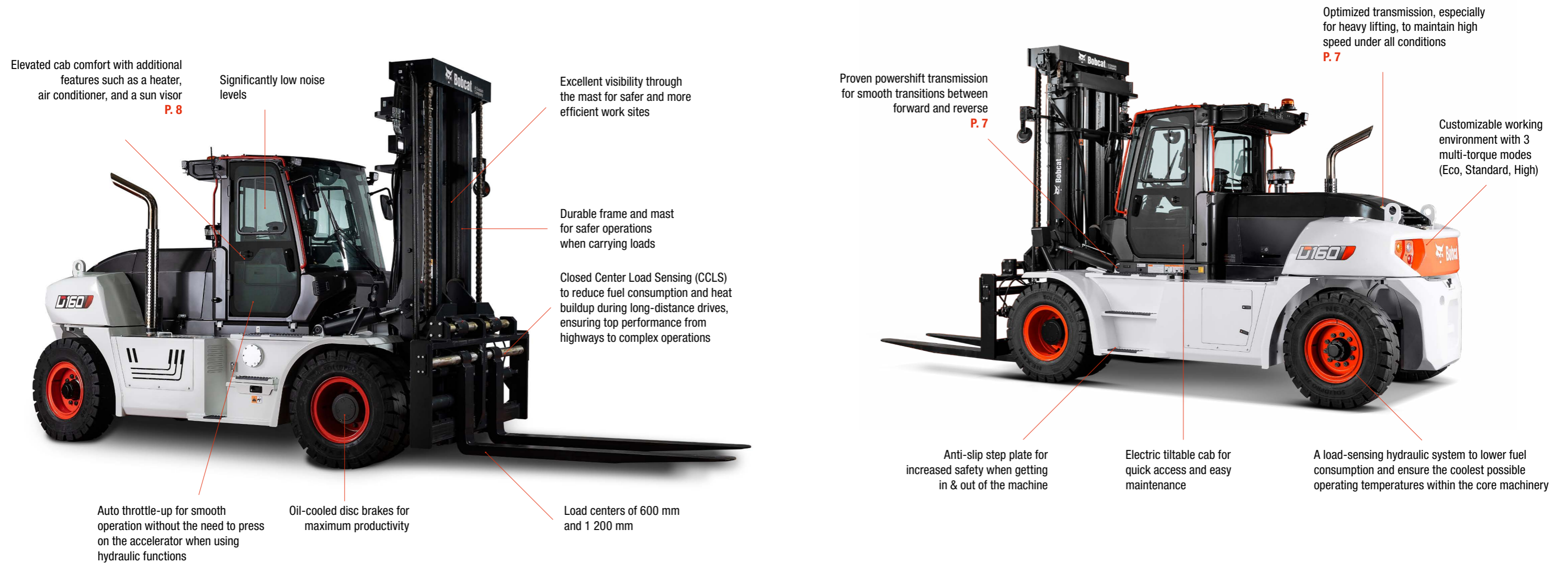
Now, with a diversified portfolio that includes forklifts and warehouse equipment, Bobcat serves as a one-stop solution for intralogistics needs, from loading shipping containers to optimizing warehouse operations. Produced in its South Korean factory, Bobcat's material handling machines offer the precision and durability customers expect.



TOUGH, AGILE & SAFE

► READY TO GIVE YOUR BUSINESS A LIFT

Give your business a boost with a diesel forklift that checks all the boxes: a high-performance, powerful, and efficient engine, smooth and variable controls, and a comprehensive set of safety features. A rugged, dependable machine that's easy to service, ensuring a low total cost of ownership.



Elevated cab comfort with additional features such as a heater, air conditioner, and a sun visor
P. 8

Significantly low noise levels

Excellent visibility through the mast for safer and more efficient work sites

Durable frame and mast for safer operations when carrying loads

Closed Center Load Sensing (CCLS) to reduce fuel consumption and heat buildup during long-distance drives, ensuring top performance from highways to complex operations

Proven powershift transmission for smooth transitions between forward and reverse
P. 7

Optimized transmission, especially for heavy lifting, to maintain high speed under all conditions
P. 7

Customizable working environment with 3 multi-torque modes (Eco, Standard, High)

Auto throttle-up for smooth operation without the need to press on the accelerator when using hydraulic functions

Oil-cooled disc brakes for maximum productivity

Load centers of 600 mm and 1 200 mm

Anti-slip step plate for increased safety when getting in & out of the machine

Electric tiltable cab for quick access and easy maintenance

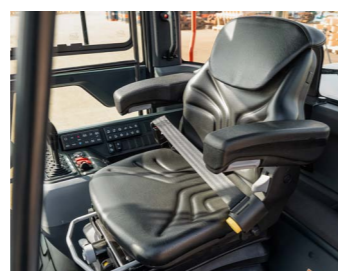
A load-sensing hydraulic system to lower fuel consumption and ensure the coolest possible operating temperatures within the core machinery



► ULTIMATE PRODUCTIVITY

Achieve greater daily productivity with high-performance engines featuring a 3-speed powershift transmission. With 129 kW of power, tackle heavy tasks more efficiently and boost overall productivity.

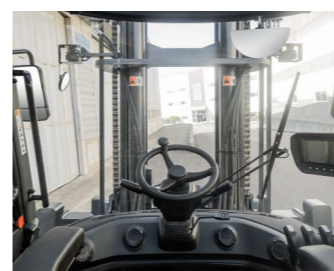
P. 6-7



► ALL-DAY COMFORT

Work through the shift in comfort and with less fatigue, thanks to many quality-of-life features as standard, including a suspension seat with interlock, color display, plenty of leg room, anti-slip plate, and more.

P. 8-9



► DRIVEN BY SAFETY

Enjoy peace of mind provided by the machine's excellent all-around visibility, superb stability, and a full suite of smart safety features.

P. 10-11



► MAXIMUM UPTIME

Minimize the total cost of ownership with longer service intervals and high-quality Bobcat genuine parts and consumables, which offer excellent value for money and help your machine run smoother and longer.

P. 12-13

OUTSTANDING PRODUCTIVITY



▶ POWERFUL DIESEL ENGINES

Experience outstanding performance with a fuel-efficient HDI engine and dependable components, providing high-end torque at low engine rpm, while ensuring reduced fuel consumption.

▶ SUPERB GRADEABILITY AND DRAWBAR PULL

Leveraging the latest engine technology and optimal synchronization between the drivetrain and hydraulic system, our current model delivers significantly high drawbar pull and gradeability.



▶ ENHANCED PERFORMANCE AND EFFICIENCY

Harness the 3-speed powershift transmission with a full electric auto-shift controller for superior power efficiency. You'll also enjoy a 5% boost in fuel efficiency, thanks to optimized engine matching for better responsiveness, powerful performance, and smooth gear shifts. Plus, enjoy easy maintenance with a self-diagnosis system.

▶ FINE-TUNED POWERTRAIN

Unleash the power of productivity with our forklift's robust powertrain. Crafted with durable, high-quality components, our powertrain elevates efficiency and performance to propel your business forward.

COMFORT & CONTROLS



▶ EASILY ADJUSTABLE SEAT & COLUMN

The premium suspension seat provides ample space for the operator with all-day comfort during long shifts. The seat and the steering wheel column are easy to adjust so that every operator feels right at home in the cab.



▶ OPTIMAL COMFORT

Experience peak comfort in the cab designed for operator ease, featuring accessible switches, ergonomic design, and spacious entry. With reduced noise, improved visibility, and added features like a heater and air conditioner (HVAC), the operator stays comfortable all shift long.



▶ MULTI-FUNCTIONAL 7" DISPLAY

This forklift features the largest display in its class for superior operability and visibility. Integrated with a rear-view camera display, it offers a weight indicator option, diagnostic functions, and choices for front and rear-view cameras. It also provides PIN code access and an integrated maintenance management program.



▶ USER-FRIENDLY CLIMATE

Enjoy complete comfort with this system's automatic temperature regulation, which combines heating, cooling, and ventilation controls. The all-in-one heating and air conditioning system delivers top-notch performance with dual evaporators.

▶ CENTRALIZED SWITCHES



All control switches are conveniently arranged in a single location to enhance the operator's machine control.

▶ FINGERTIP CONTROLS



Control the machine with precision while reducing fatigue with the ergonomic fingertip controller.

▶ QUIETER OPERATIONS



Upgrade operator comfort with the pressurized cab's two large air filters that effectively keep dust out. Plus, enjoy minimal noise at the driver's ear and reduced vibrations.



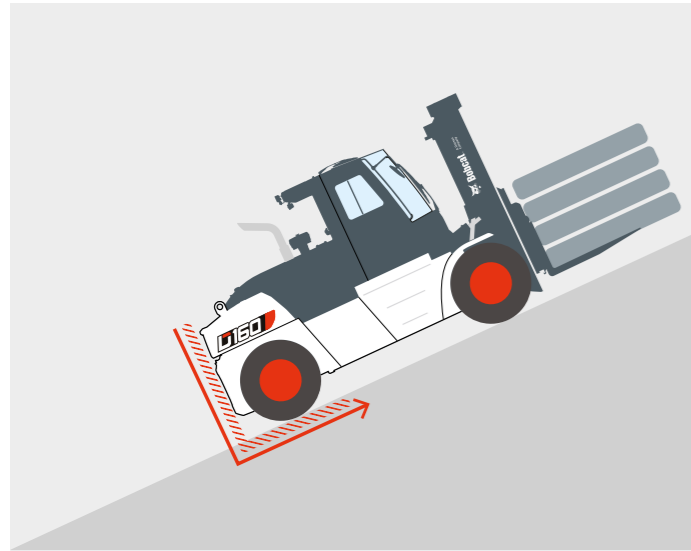
SAFETY IN EVERY MOVE

▶ ADVANCED PROTECTION FOR YOU AND YOUR OPERATION

Bobcat forklifts have safety embedded in their DNA. Packed with tons of features that protect your well-being and investment, these machines give you peace of mind in every task, every day.

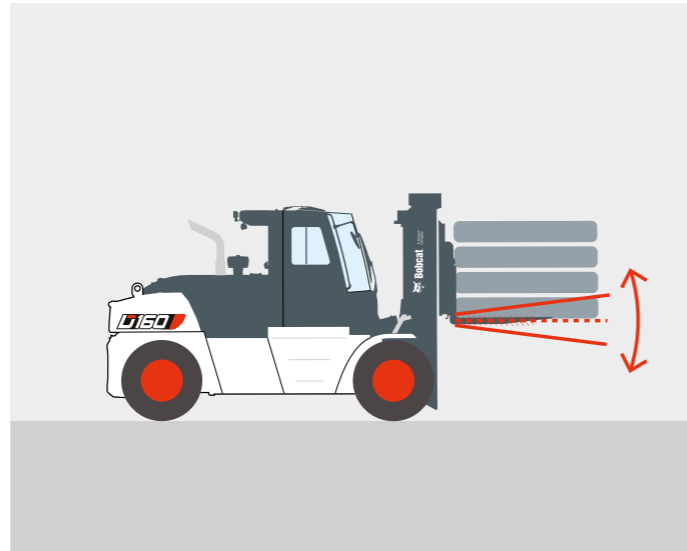
▶ HILL START ASSIST (HSA)

The Hill Start Assist (HSA) ensures stability and prevents rollbacks by automatically activating the parking brake on slopes.



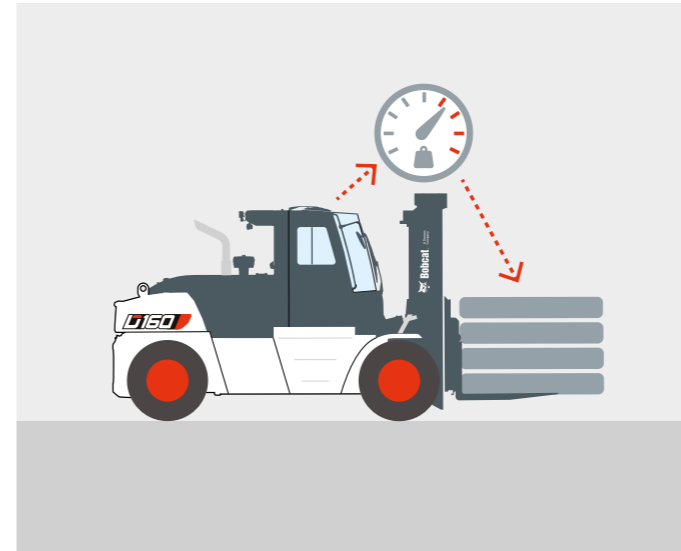
▶ AUTO TILT LEVELING

The auto tilt leveling automatically adjusts the fork angle to keep loads stable and level on uneven surfaces or slopes, allowing for more controlled handling of materials.



▶ WEIGHT SCALE

With the help of an integrated weight scale, operators can prevent truck overload, keeping the workplace safer and more secure.



▶ REAR GRAB BAR WITH HORN

The rear grab bar provides stability during reverse maneuvers and tight space navigation. Plus, the horn can be easily activated with the push of a button conveniently located on the bar.



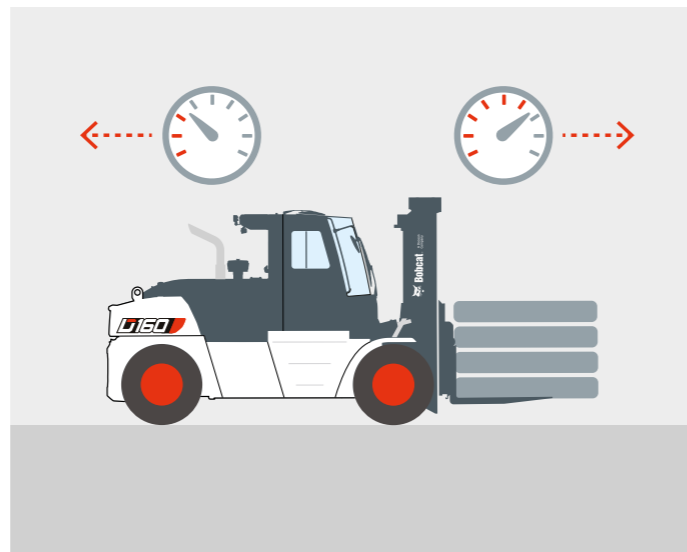
▶ REAR DETECTOR

The rear detector alerts the operator to obstacles behind the vehicle when traveling in reverse.



▶ GROUND SPEED CONTROL

Setting up a speed limit prevents the truck from going too fast. This limit can be customized for both forward and reverse directions.



▶ LARGE PANORAMIC AND REAR-VIEW MIRRORS

The large panoramic and rear-view mirrors provide excellent visibility to the rear working area, enhancing safety while contributing to overall productivity.



▶ POWERFUL LED LIGHTS

The LED lights are powerful enough to light up even the darkest places in your workplace, ensuring you are always aware of your surroundings.

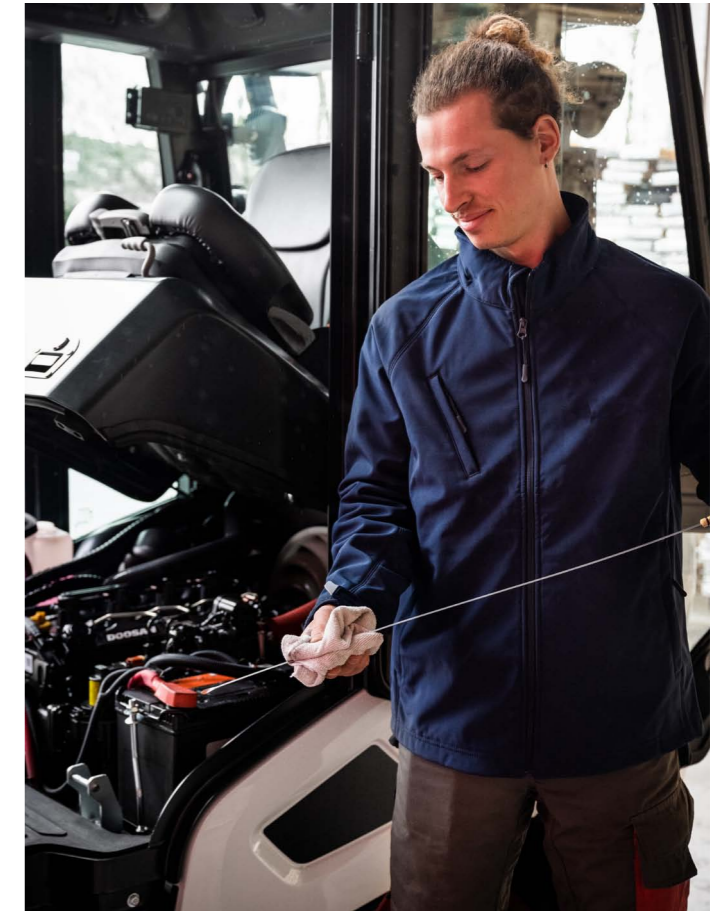
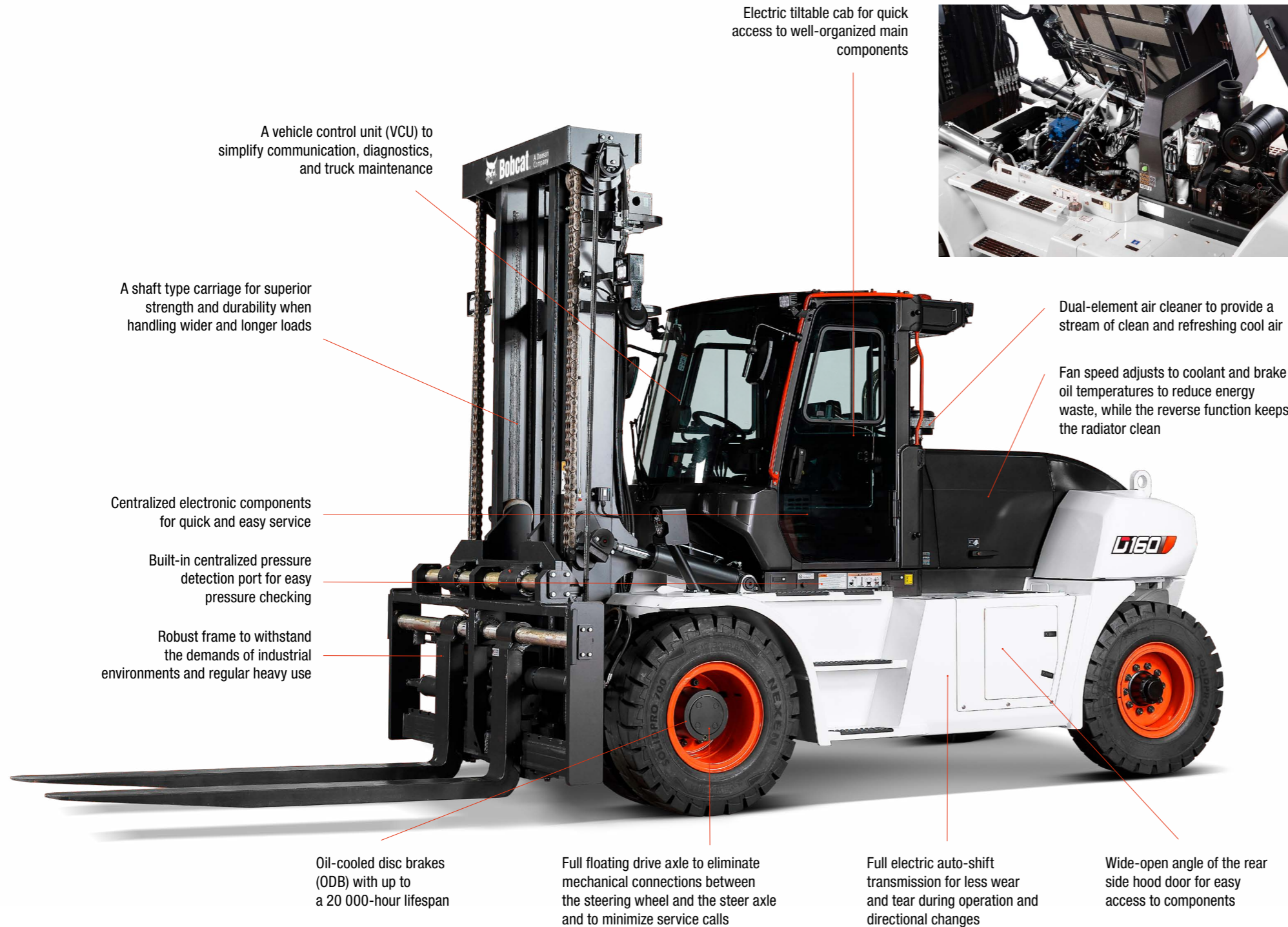


BUILT TO LAST

EXCELLENT RELIABILITY

With a robust engine featuring an auto-shift transmission, full floating drive axle, and shock-absorbing hydrostatic power steering, the Bobcat 9-Series Diesel forklift's heavy capacity is engineered to endure, ensuring maximum uptime and unwavering dependability.

THERE'S NO TIME FOR DOWNTIME. STAND UP TO EVERY TASK THAT COMES YOUR WAY, DAY AFTER DAY.



EXTENSIVE DEALER NETWORK

You can rely on our network of dealers and service partners who are always ready to help you.

BOBCAT GENUINE PARTS

Quality components delivered to our dealers guarantee that all of our equipment is built to last, withstand the toughest conditions and provide reliable performance.

MAIN SPECIFICATIONS

MAIN SPECIFICATIONS		D100S-9	D120S-9	D140S-9	D160S-9	DV160S-9
Emission regulation	kg	EU Stage5, Tier4	EU Stage5, Tier4	EU Stage5, Tier4	EU Stage5, Tier4	EU Stage5, Tier4
Load capacity	kg	10000	12000	14000	16000	16000
Load center	mm	600	600	600	600	1200
Wheelbase	mm	3000	3000	3250	3250	3750
Height, mast lowered	mm	2965	2965	3170	3170	3245
Free lift	mm	0	0	0	0	0
Lift	mm	3000	3000	3100	3100	3100
Height, mast extended	mm	4465	4465	4670	4670	4715
Height, overhead guard	mm	2830	2830	2860	2860	2860
Height of seat	mm	1800	1800	1830	1830	1830
Length to forkface	mm	4490	4500	4830	4830	5555
Overall width	mm	2350	2350	2490	2490	2540
Turning radius	mm	4255	4255	4545	4545	5115



STANDARD EQUIPMENT & OPTIONS

STANDARD EQUIPMENT & OPTIONS	
PRODUCTIVITY	
Powerful engine compliant with Euro Stage IV	✓
Power steering	✓
3-speed ZF transmission (Autoshift)	✓
Closed Center Load Sensing (CCLS)	✓
Auto-throttle	✓
Multi-torque mode (Eco/Std/High)	✓
SAFETY	
Excellent visibility	✓
Electronic parking brake	✓
Back-up alarm	✓
Hill Start Assist (HSA)	✓
Speed limit	✓
Rear-view mirror (LH/RH) / Heated mirror	✓
Front and rear combination LED lights (with hazard switch)	✓
Guardian Stability System (GSS)	•
Seat belt interlock	•
Safety blue light (always on or activated by gear)	•
4 th lever interlock for attachment	•
Front camera, rear-view camera	•
Weight systems (hydraulic / load cell)	•
Auto tilt leveling	•
Rear object detection system with beep sound	•
Siren and microphone	•
Ground speed control	•
2 front/rear LED lights (on operator compartment)	•
Additional front/rear light on mast/counterweight	•
Strobe light	•

STANDARD EQUIPMENT & OPTIONS	
RELIABILITY	
Oil-cooled disc brakes (ODB)	✓
Dual element air cleaner	✓
Precleaner	✓
Full autoshift transmission	✓
Rigid drive axle	✓
Waterproof connectors	✓
Integrated type vehicle control unit (VCU)	✓
Fan driving system	✓
½" attachment hose	✓
Side panel with pressure check package	✓
Mudguard for front and rear tires	•
Under protection (belly plate)	•
Under protection (engine guard)	•
ERGONOMICS	
Suspension seat with arm rest	✓
7" multi-functional display (full color)	✓
Telescopic steering column (with tilting)	✓
Rear grab bar with horn	✓
Power jack and USB port	✓
Key switch	✓
Full cab	•
Fingertip (3-way, 4-way, 5-way)	•
HVAC system (Heating, Ventilation & Air conditioner)	•
Audio (DAB type radio, MP3)	•
Operator fan	•
Push to start with pin code	•
Lift eyes	•
SERVICEABILITY	
Tiltable operator compartment	✓
Wide hood open range	✓
EasyView	✓
Centralized pressure detection port	✓
Junction box	✓
Manual / electric cab tilting	✓
Battery disconnect switch	✓
Hydraulic pressure check package	•
Tankless air compressor	•
Automatic reversible cooling fan	•

*This list is based on factory data. Standard or optional can vary for specific countries.

- = option
- ✓ = standard
- = not available

YOUR TRUSTED BUSINESS PARTNER

Your machine builds your business and reputation. Everything we put into Bobcat equipment is designed to make this possible. Strength, versatility, or agility, it's built around you.



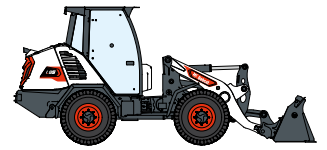
340 MACHINES / 150 ATTACHMENT FAMILIES / 1 TOUGH ANIMAL



SKID-STEER LOADERS



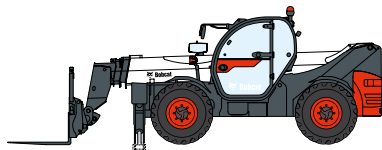
COMPACT TRACK LOADERS



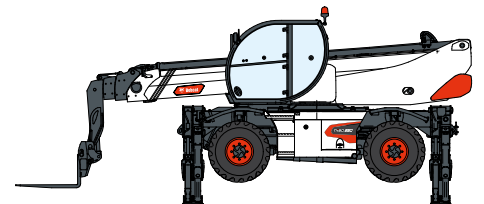
COMPACT WHEEL LOADERS



FORKLIFTS



TELEHANDLERS



ROTARY TELEHANDLERS



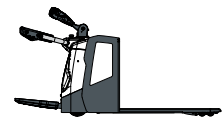
LIGHT COMPACTION EQUIPMENT



COMPACT EXCAVATORS



COMPACT TRACTORS



WAREHOUSE EQUIPMENT



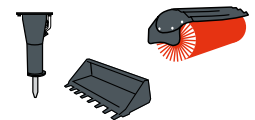
MINI TRACK LOADER



MOWERS



PORTABLE POWER



ATTACHMENTS

DOOSAN

Bobcat is a Doosan Company. Doosan is a global leader in construction equipment, power & water solutions, engines, and engineering proudly serving customers and communities for more than a century. | Bobcat and the Bobcat logo are registered trademarks of Bobcat Company in the United States and various other countries. ©2024 Bobcat Company. All Rights Reserved.

Doosan Bobcat Korea Co., Ltd.

www.bobcat.com



Bobcat®