

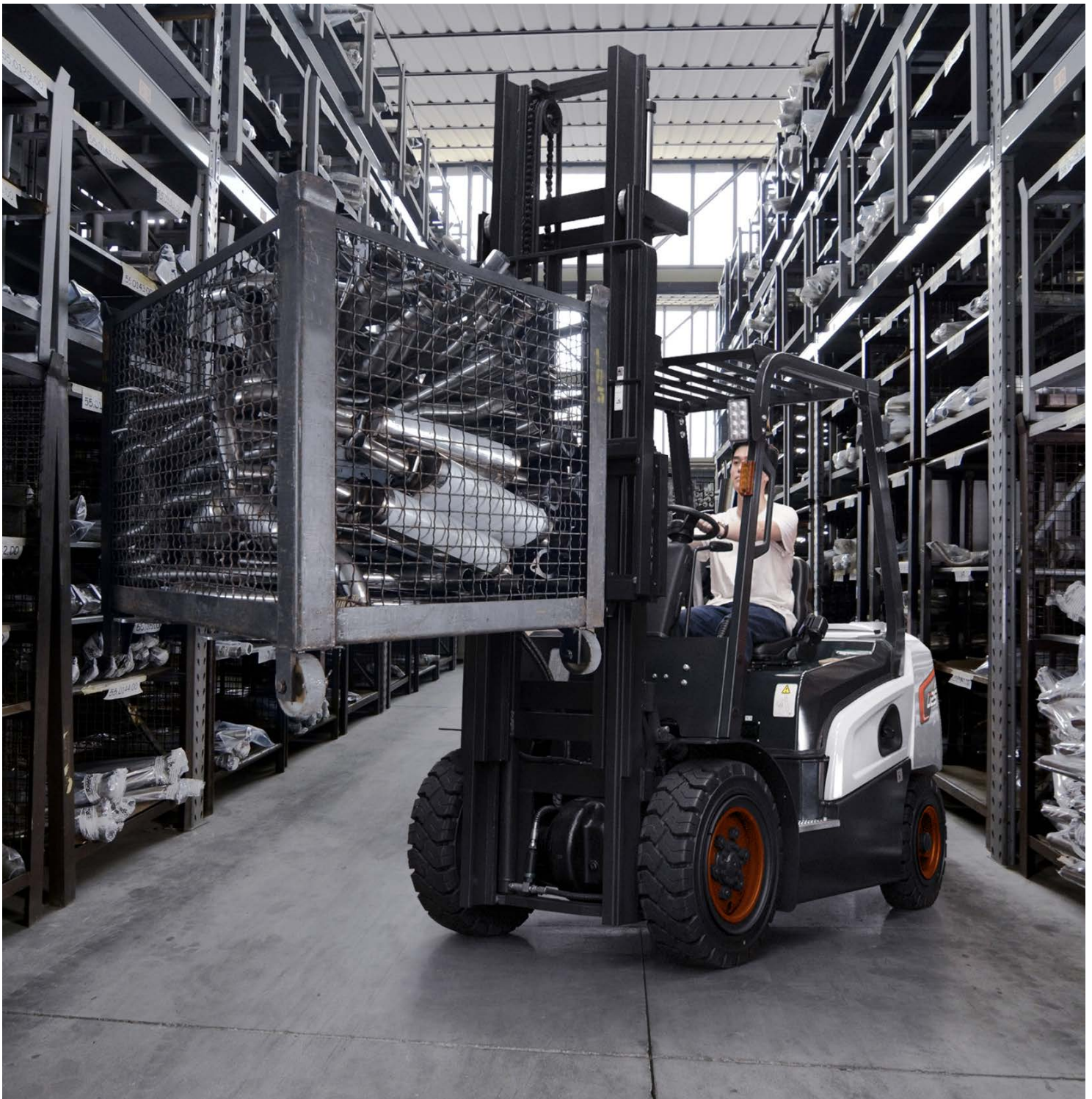


Bobcat[®]

One Tough Animal.

DIESEL FORKLIFTS

Diesel 2.0 to 3.5 ton Capacity, Euro Stage V D20NXP / D25NXP / D30NXP / D33NXP / D35NXP



ONE TOUGH ANIMAL

▶ OUR MISSION

We empower operators to accomplish more, while working in the toughest conditions and tightest situations. When our customers have the will, we provide the way.

▶ BOBCAT'S HISTORY

In 1958, Melroe Manufacturing Company introduced a compact front-end loader that evolved quickly into the M400, the world's first true skid steer loader. The company soon adopted what became the world-famous 'Bobcat' brand – and its success paved the way for the global compact equipment industry we know today.



▶ YEARS OF EXPERIENCE

In 2021, Bobcat expanded its portfolio by acquiring Bobcat Industrial Vehicle. This specialist in material handling equipment constructed its first forklift in 1968 and went on to establish a global presence with 400 dealers in 93 countries.



▶ BOBCAT TODAY

Bobcat is expanding its portfolio with the addition of forklifts and reach trucks for the material handling industry. Offering a comprehensive line-up that will meet all your intralogistics needs. Bobcat forklifts and reach trucks are produced in our factory in Korea and China, while our premium quality warehouse equipment is made in Germany.



EXPERIENCE THE FULLY ENHANCED VALUE OF NXP SERIES

► **EVERYTHING HAS BEEN CHANGED. NEW NXP, THE GAME CHANGER.**

The new NXP series offering outstanding power, durability and operator comfort realizes customer satisfaction through providing the best productivity and convenience in various industrial applications.



► **STYLISH DESIGN**
By applying the Bobcat new design, it represents the Bobcat's unique exterior.



► **POWERFUL PERFORMANCE**
The combination of powerful engine, transmission, and drive axle maximizes the performance and gives best productivity in various work applications.

P 6-7



► **ALL-DAY COMFORT**
The operator compartment is more spacious and ergonomically designed to reduce driver's fatigue. It enables more comfort and safe operation.

P 10-11

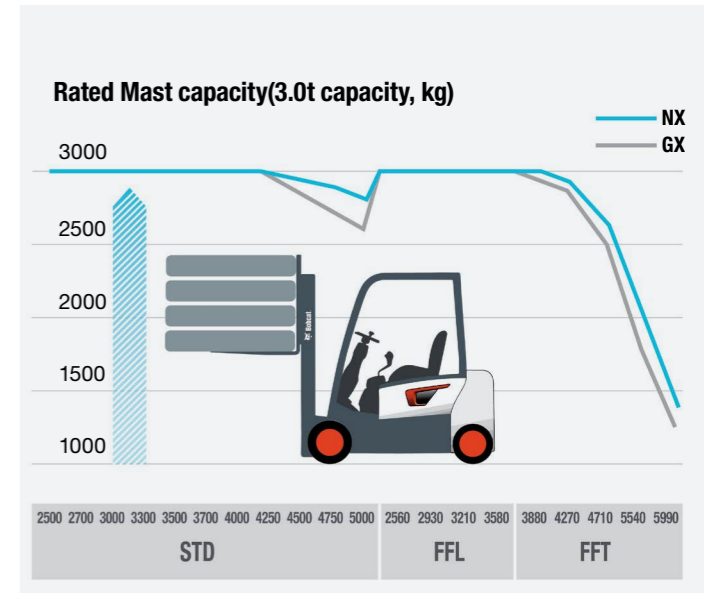
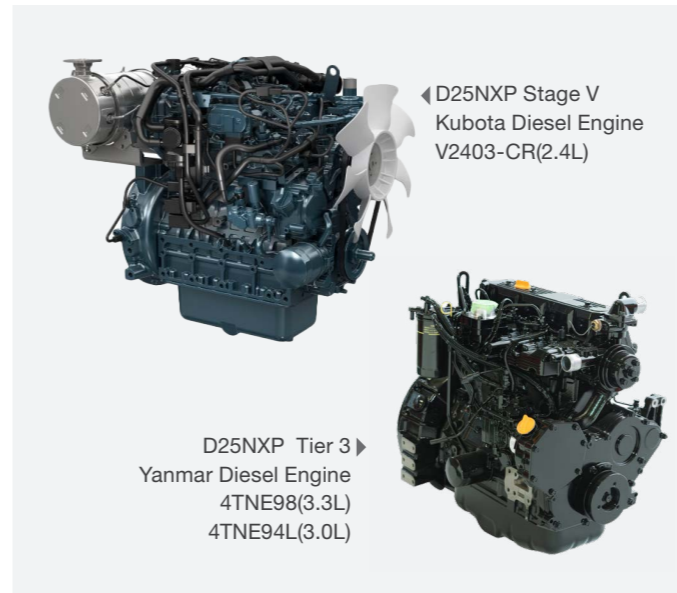


► **MAXIMUM UPTIME**
The robust components ensure durability and reliability. All primary components are easily accessible, making maintenance simple and efficient.

P 13



POWERFUL PERFORMANCE



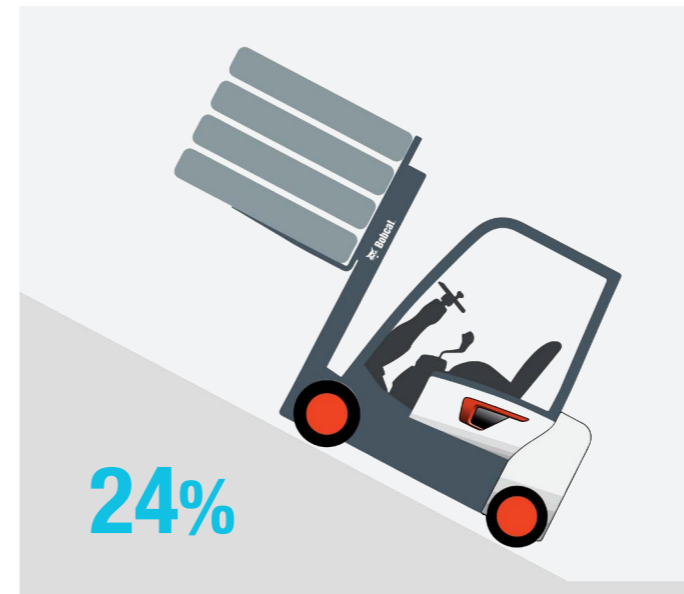
ENGINE

Kubota V2403-CR Diesel engine makes powerful performance and generating capacity by the technology of key temperature control. It also increase the ash cleaning and engine oil change interval, so give the value to customer TCO optimization.

Yanmar 3.0L/3.3L diesel engine gives high-torque at low RPM, designed for industrial vehicles. It effectively improves acceleration, driving and climbing performance of the forklift truck. It is complied with Euro Stage IIIA or EPA Tier-3.

HIGH RESIDUAL CAPACITY

NXP can lift about 10% more weight at the same height with the aux weight structure and powerful hydraulic system. (* Single pneumatic tire truck) It is suitable for work areas with high rack height.



POWERFUL GRADEABILITY

With the powerful engine, transaxle and aux weight structure, gradeability is maximized and makes it easy to go up the 24% steep slopes.
[Max Gradeability @1.6km/h, Laden]
D30NXP 3.0t capacity truck
- Stage V : 23%



HIGH SPEED OF LIFTING / LOWERING

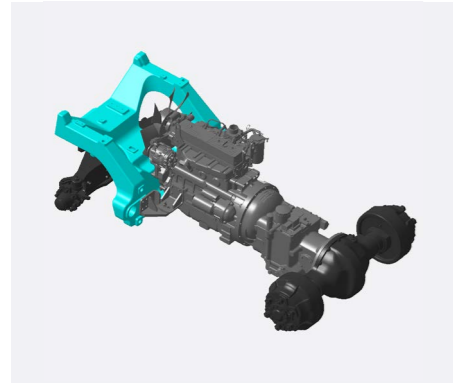
Gear pump and mast regulator valve are optimized to increase the lifting / lowering speed and it makes operation more productive.

DURABILITY GUARANTEED

▶ ADVANCED DESIGN FOR YOU AND YOUR OPERATION

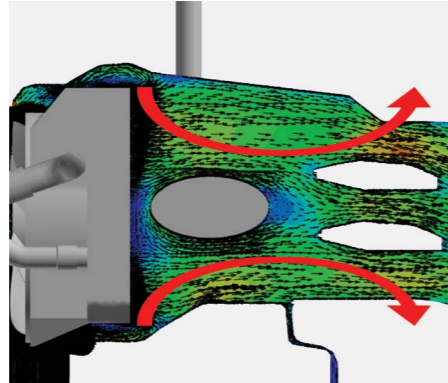
The NXP Series is equipped with advanced design to reduce noise, vibration, heat, dust - inflow, ensures durability of major components. With the improved design and additional option, NXP guarantees durability in harsh operating conditions.

▶ AUX WEIGHT



Many troubles are caused by vibration. In NX series, the engine is mounted on the Aux. weights to effectively absorb vibration and suppress noise. It extends parts durability and prevents durability decline and oil leakage.

▶ OPTIMIZED AIR FLOW



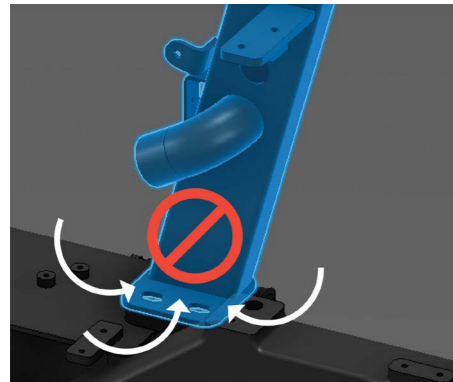
Air flow is optimized by improving muffler position, clearance between parts and enlarging the inner space of counter weight. It streamlines the air flow and increases the cooling performance.

▶ ROBUST MAST



Reinforcement rib (J channel) of mast beam improves mast stiffness and lateral stability. Six roller carriage gives superior strength and durability for wider and longer loads.

▶ ANTI DUST DESIGN



The bottom-sealed overhead guard absolutely eliminates the dust inflow from the bottom side.

▶ DUAL ELEMENTS AIR CLEANER



Air cleaner with dual element filter protects engine against dust effectively, ensuring the durability of engine. It is equipped as standard in NX Plus model.

▶ PRE CLEANER (OPTION)

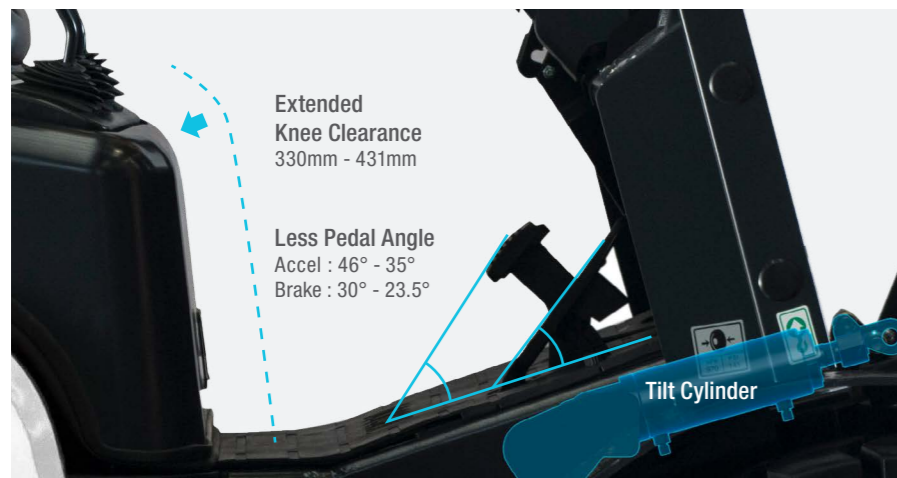


In a dusty environment, pre-cleaner removes dust in advance and extends lifecycle of air cleaner effectively.





Extended Pedal Clearance
63mm - 76mm



Extended Knee Clearance
330mm - 431mm

Less Pedal Angle
Accel : 46° - 35°
Brake : 30° - 23.5°

Tilt Cylinder

▶ MORE SPACIOUS LEG ROOM
The knee clearance is widened and tilt cylinder is removed on the floor plate, it allows more spacious leg room. Accel and brake pedal clearance and angle are improved to reduce ankle fatigue.

COMFORT

EXCELLENT OPERATOR COMFORT

▶ IMPROVED FRONT / REAR VISIBILITY



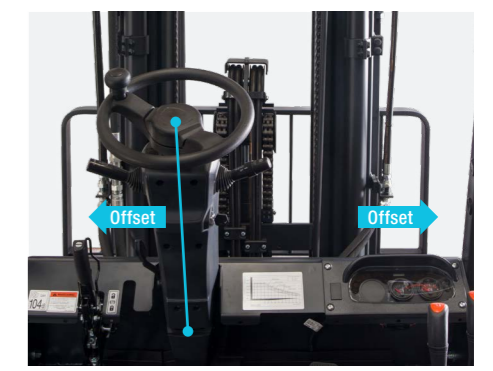
The improvement of FCU column height and counter weight design has increased front and rear visibility and enables safer driving.

▶ WIDE MAST VISIBILITY



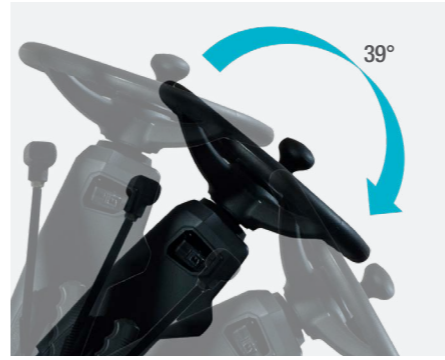
Neatly arranged hoses and chains provide wide visibility.

▶ STEERING COLUMN & INSTRUMENT PANEL OFFSET



Steering column is shifted to the left for more comfortable posture. Instrument panel is also shifted to the right for easier viewing.

▶ ADJUSTABLE TILT STEERING COLUMN



The steering column can be adjusted over a wide range of angles, allowing optimal posture for operator.

▶ COMPACT STEERING WHEEL



Compact steering wheel offers steering convenience and reduces operator fatigue.

▶ INTEGRATED LAMP SWITCH



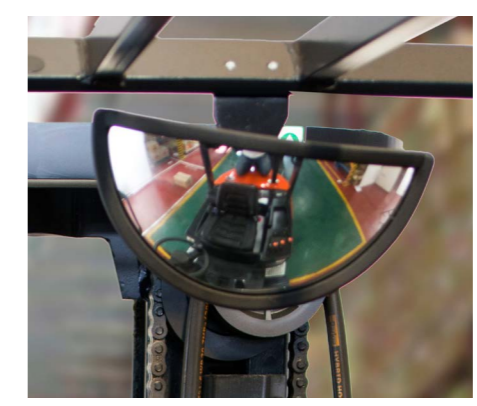
The turn signal and head lamp switches are integrated for convenient operation.

▶ LED LAMP



Long-lasting, high-brightness LED lights is equipped as standard feature.

▶ PANORAMIC MIRROR



The panoramic mirror offers wide rear view and greatly improves driving safety.

▶ EXTENDED STEERING ANGLE



Turning radius is improved by increasing the steering angle. It brings more maneuverability in small space.

BUILT TO LAST

▶ ENHANCED SAFETY

NXP helps safer operation. NXP is equipped with various safety features. It prevents unexpected accidents, ensuring safety of employees.

THERE'S NO TIME FOR DOWNTIME. STAND UP TO EVERY TASK THAT COMES YOUR WAY. DAY AFTER DAY.

Large Entry Grip Bar

The entry grip bar is larger, so it is easy to grip and allows safer ride on / off.

Rearranging of Tilt Cylinder

Tilt cylinder is removed on the floor plate, preventing operator from falling over.

Anti-Skid Step Plate

The wider step plate prevents slipping and it also helps safer ride on / off.



▶ OSS (OPERATOR SENSING SYSTEM)

OSS function avoids any unintended truck movements when the operator is not seated.

- ① Warning when operator leaves the seat without parking brake.
- ② Warning when operator drives without seatbelt fastened.
- ③ Automatically stop the vehicle when operator leaves the seat.



▶ ISO3691 HYD. LOCKING VALVE

If operator leaves or turns-off the truck, this system will automatically lock the hydraulic function, not allowing lifting, tilting, lowering.

▶ JUNCTION BOX (FOR DIESEL STAGE V)

Fuse and relay are concentrated for easy maintenance.



Wide Open Hood Angle

It is easy to access engine room by enlarging the hood open angle.

Hood Locking Cylinder

It helps easy maintenance and prevents safety accident.

Removable Side Cover

By applying knob bolt, it can be disassembled by hand.



TECHNICAL SPECIFICATIONS

MAIN SPECIFICATIONS						
		D20NXP	D25NXP	D30NXP	D33NXP	D35NXP
Load capacity	kg	2000	2500	3000	3300	3500
Load center	mm	500	500	500	500	500
Wheelbase	mm	1625	1625	1700	1700	1700
Height, mast lowered	mm	2045	2045	2045	2045	2045
Free lift	mm	150	150	150	150	150
Lift	mm	3000	3000	3000	3000	3000
Height, mast extended	mm	4247	4247	4247	4252	4252
Height, overhead guard	mm	2160	2160	2160	2160	2160
Height of seat	mm	1185	1185	1185	1185	1185
Length to forkface	mm	2560	2610	2665	2730	2750
Overall width	mm	1290	1290	1290	1290	1290
Turning radius	mm	2280	2330	2415	2460	2480

Specification values quoted in this specification sheet have been rounded. Performance may vary depending on operating conditions. Products and specifications are subject to improvement and change without prior notice.



STANDARD EQUIPMENT & OPTIONS

STANDARD FEATURES AND OPTIONAL EXTRAS	
PERFORMANCE	
Transmission Type: Auto shift	✓
Aux. Weight	✓
Power Shoe Brakes	✓
DURABILITY	
Mast with JJ Beam	✓
Anti dust Overhead guard	✓
Dual element Air cleaner	✓
Pre cleaner	•
Autoshift Controller	•
SAFETY	
Operator Sensing System	✓
Back up Alarm - Inside	✓
Control Valve with Hydraulic locking	✓
Rear Safety Light	•
Rear Grab Bar with Horn	•
Strap, Static Ground	•
Strobe	•
Spark Arrester	-

* Remark : This list is based on factory data. Standard or optional can vary for specific countries.

- = option
- ✓ = standard
- = not available

STANDARD FEATURES AND OPTIONAL EXTRAS	
OPERATOR COMFORT	
Hydraulic Control Levers	✓
Spacious Leg Room / Comfort Pedal Layout	✓
Clear Front/Rear/Mast Visibility	✓
LED Combination Lamps	✓
Compact Steering Wheel	✓
Large Entry Grip Bar	✓
Anti-skid Step Plate	✓
Panoramic Mirror	✓
Integrated Lamp Switch	✓
Adjustable Steering column	✓
Steering Knob	✓
Clip Board	✓
Modular Cabin - Type A,B,C	•
Full Cabin (with Heater & Air Conditioner)	•
Cup Holder	•
USB Port	•
Fuel Cap	•
Quick Disconnect Hose Couplings	•
Fan	•
SERVICEABILITY	
Toolless Side panel	✓
Toolless Floor Plate	✓
Hood locking cylinder	✓
Junction Box	✓

* Note: This dimensional drawing only applies to the 4 wheels series.

YOUR TRUSTED BUSINESS PARTNER

Your machine builds your business and reputation. Everything we put into Bobcat equipment is designed to make this possible. Strength, versatility, or agility, it's built around you.



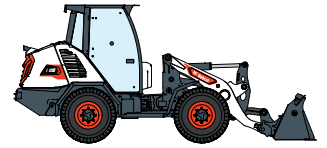
145 MACHINES / 46 PRODUCT FAMILIES / 1 TOUGH ANIMAL



SKID-STEER LOADERS



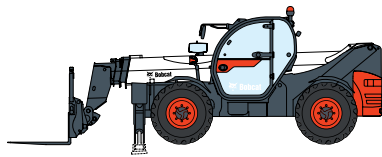
COMPACT TRACK LOADERS



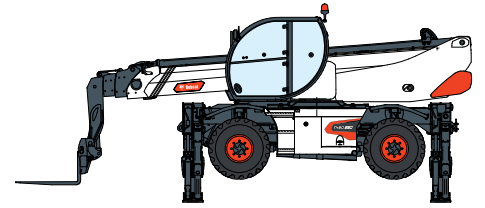
COMPACT WHEEL LOADERS



FORKLIFTS



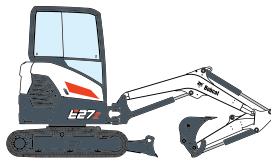
TELEHANDLERS



ROTARY TELEHANDLERS



LIGHT COMPACTION EQUIPMENT



COMPACT EXCAVATORS



COMPACT TRACTORS



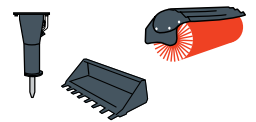
SMALL ARTICULATED LOADERS



MINI TRACK LOADER



MOWERS



ATTACHMENTS

DOOSAN

Bobcat is a Doosan Company. Doosan is a global leader in construction equipment, power & water solutions, engines, and engineering proudly serving customers and communities for more than a century. | Bobcat and the Bobcat logo are registered trademarks of Bobcat Company in the United States and various other countries. ©2024 Bobcat Company. All Rights Reserved.

Doosan Bobcat Korea Co., Ltd.



Bobcat®