



**Bobcat®**

*One Tough Animal.*

# ELECTRIC FORKLIFTS

7-Series PLUS, 1.6 to 3.5 ton capacity

**B15/18/20T-7 PLUS / B16/18/20X-7 PLUS / B25/30/35X-7 PLUS**



# ONE TOUGH ANIMAL

**OUR MISSION**

We empower operators to accomplish more, while working in the toughest conditions and tightest situations. When our customers have the will, we provide the way.

## INTRODUCTION

**BOBCAT'S HISTORY**

In 1958, Melroe Manufacturing Company introduced a compact front-end loader that evolved quickly into the M400, the world's first true skid steer loader. The company soon adopted what became the world-famous 'Bobcat' brand – and its success paved the way for the global compact equipment industry we know today.



**YEARS OF EXPERIENCE**

In 2021, Bobcat expanded its portfolio by acquiring Doosan Industrial Vehicle. This specialist in material handling equipment constructed its first forklift in 1968 and went on to establish a global presence with 400 dealers in 93 countries.



**BOBCAT TODAY**

Bobcat is expanding its portfolio with the addition of forklifts and reach trucks for the material handling industry. Offering a comprehensive line-up that will meet all your intralogistics needs. Bobcat forklifts and reach trucks are produced in our factory in Korea, while our premium quality warehouse equipment is made in Germany.



# TOUGH, AGILE & SAFE

## ► READY TO GIVE YOUR BUSINESS A LIFT

With enhanced cooling, water resistance, and lower noise levels, our forklifts are designed to optimize performance, offering dual traction motors, power steering, and regenerative braking, while providing all-day comfort and dependability.



Reduced noise at ear level to protect the operator's hearing

Excellent visibility through the mast enables you to work safer and with more efficiency  
**P7**

Durable frame and mast guarantee safer operation when carrying loads

Make the operator compartment your own by choosing your preferred control convenience (fingertip or levers)



Good visibility through roof enhances operator vision while lifting

Premium adjustable seat and steering column ensure maximum comfort during long shifts  
**P11**

Improved cooling performance can reduce the risk of overheating, resulting in less downtime and increased productivity

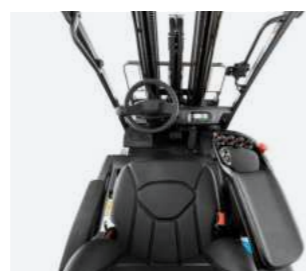
Side battery removal allows multi-shift operations  
**P7**

Electric footbrake (EFB) provides reliable braking power with less components to service  
**P11**

Increased steer angle reduces the steering radius, allowing for improved maneuverability  
**P7**



► **OUTSTANDING PRODUCTIVITY**  
Experience outstanding driving performance with a small turning radius, high visibility, design and powerful motor system, which ultimately enhances productivity.  
**P 6-7**



► **ALL-DAY COMFORT**  
Enjoy the ergonomically designed adjustable steering and seats with optional fingertip control. Noise reduction has also been incorporated for the highest level of operator comfort.  
**P 8-9**



► **SAFETY IN EVERY MOVE**  
This series comes equipped with Hill Start Assist, EPB, EFB, and mast sway control that effectively prevent potential hazards, enabling a secure and safe work environment.  
**P 10-11**



► **MAXIMUM UPTIME**  
The robust components ensure durability and reliability. All primary components are easily accessible, making maintenance simple and efficient.  
**P 12-13**



# OUTSTANDING PRODUCTIVITY



### ▶ EXCELLENT VISIBILITY

Thanks to the precisely designed overhead guard with angled roof bars, and excellent visibility through the mast you'll get the best view on the task at hand and accomplish more every day.



### ▶ POWERFUL TRACTION AND PUMP MOTOR SYSTEM

Improve your performance and productivity with the help of a powerful pump motor system providing high traction and torque.



### ▶ EASY SIDE BATTERY REMOVAL

The battery changing system enables fast and easy battery exchange using Side Roll-In/Out or Side Lift In/Out methods. This allows for multi-shift operations to be conducted efficiently.



### ▶ OPTIMIZED STEERING ANGLE

Enjoy working in places where others cannot – even when space is limited. Thanks to the small turning radius you'll be able to maneuver in and out of the tightest spots easily.

# COMFORT & CONTROLS



## ► PREMIUM ADJUSTABLE SEAT

Thanks to the adjustable suspension seat, our forklifts provide exceptional comfort even during long shifts. For additional convenience, you can equip your seat with a heating system to keep operators warm in colder environments.



## ► ADJUSTABLE COLUMN

The ergonomic steering wheel column features step-less adjustment to let operators position it exactly where they need.



## ► INTUITIVE INSTRUMENT PANEL

Control the truck's performance settings on the go with a simple touch of a button.



## ► CONVENIENCE TRAY

A large cup holder, USB port, 12V power outlet, clipboard holder, and more are placed comfortably within your reach for maximum convenience.

## ► ANTI SLIP STEP & ENTRY BAR



The anti-slip step provides comfortable and safe mounting and dismounting of the vehicle for additional peace of mind.

## ► WELL-PLACED HANDLES



Stepping in and out of your vehicle is as quick and comfortable as it gets thanks to the well-placed entry bar and handles.

## ► EMERGENCY SWITCH



The emergency switch is always within your reach, ready to be pressed easily in case of emergency.



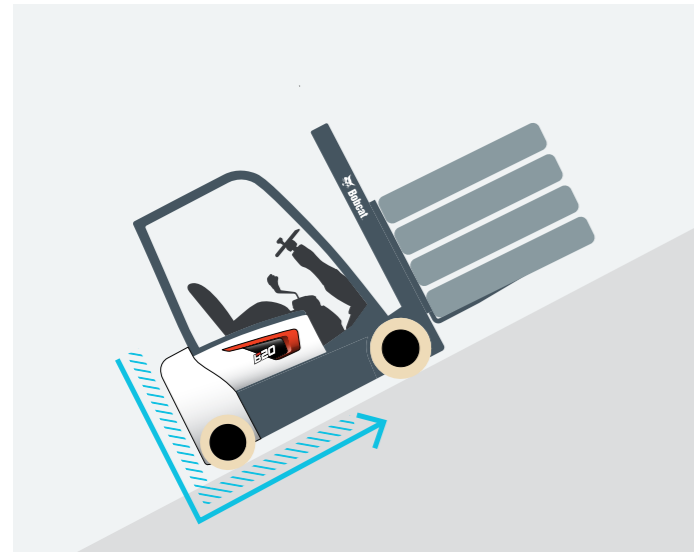
# SAFETY IN EVERY MOVE

## ▶ ADVANCED PROTECTION FOR YOU AND YOUR OPERATION

Bobcat forklifts have safety embedded in their DNA. Packed with tons of features that protect your health and your investment, these machines give you peace of mind in every task, every day.

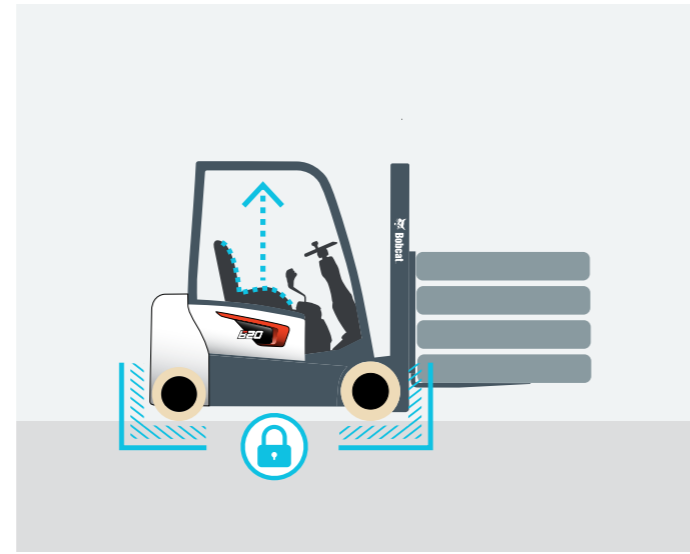
### ▶ HILL START ASSIST

Regardless of the position of the vehicle, the Hill Start Assist keeps the machine stationary unless movement is initiated by the operator.



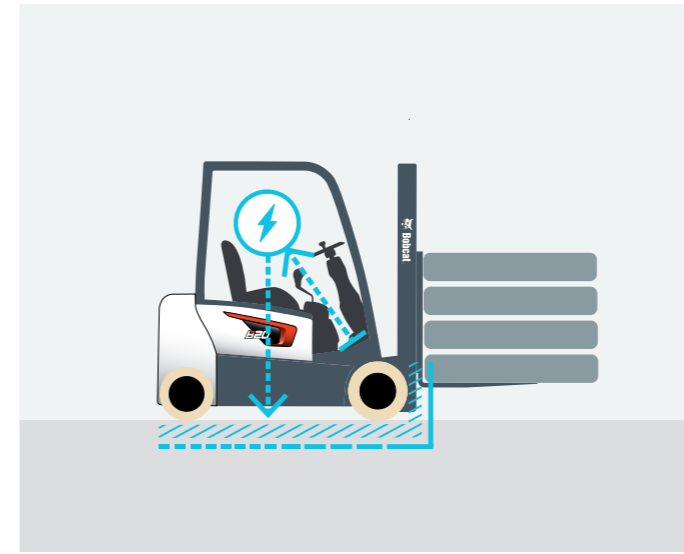
### ▶ ELECTRIC PARKING BRAKE (EPB)

The parking brake is designed to engage automatically, without the need for a physical switch. This feature enhances safety by ensuring that the vehicle remains stationary when the operator exits the seat.



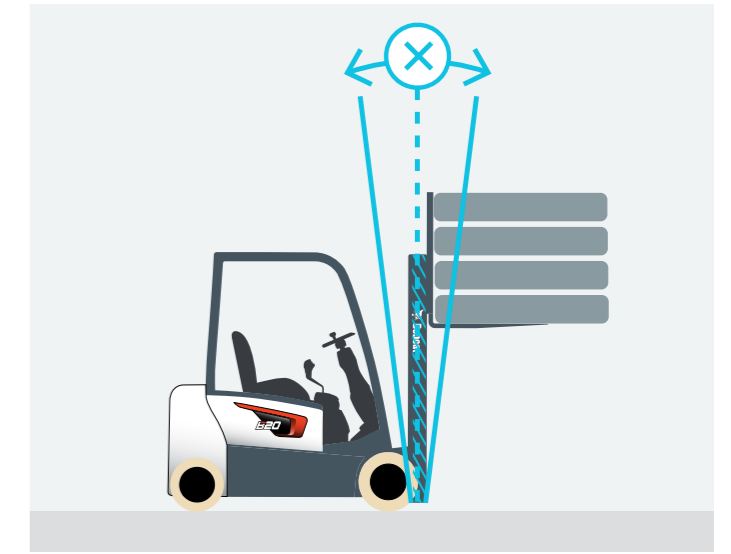
### ▶ ELECTRIC FOOT BRAKE SYSTEM (EFB)

This advanced braking technology is designed to activate when the operator releases pressure from the accelerator pedal. Furthermore, this innovation has been expanded to include the service brake system.



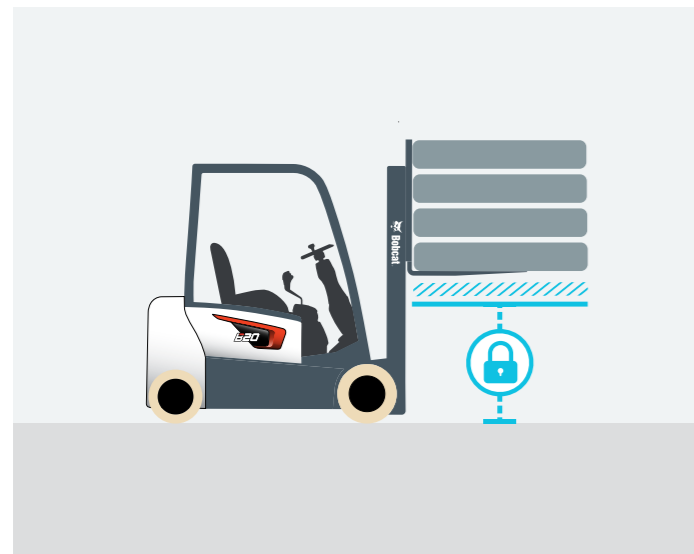
### ▶ MAST SWAY CONTROL

The updated design enhances forklift safety by reducing mast oscillation during operation at maximum height, with control of drive speed proportional to the mast height. The vehicle's maximum speed is automatically reduced by 50%, and the Guardian Stability System is included as standard.



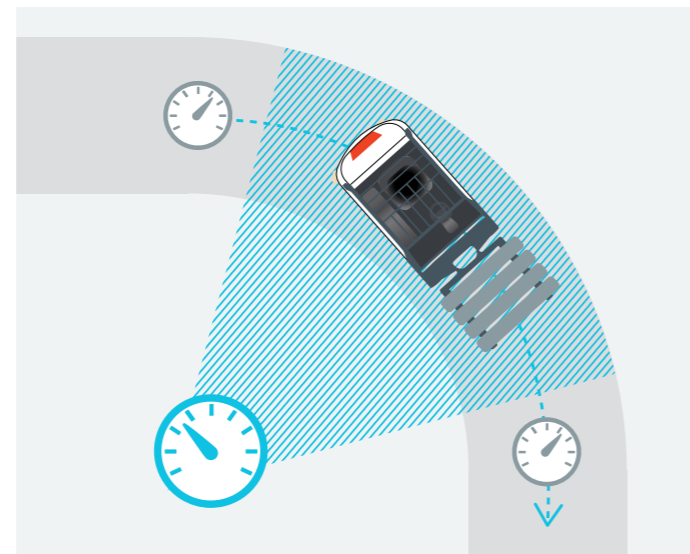
### ▶ MAST LOWERING INTERLOCK & TILT LOCK

When the operator leaves the truck unattended, the hydraulic locking system prevents unintentional lowering and tilting of the mast. This keeps the truck, load, and work array safe.



### ▶ DRIVE SPEED CONTROL

Depending on how high the forklift needs to lift, its travel and lift speeds are adjusted automatically for additional safety.



### ▶ LARGE PANORAMIC MIRROR

Providing great visibility of the rear working area, the large panoramic mirror improves safety and adds to your overall productivity at the same time.



### ▶ RED FENCE LIGHTS

The vehicle projects red light-lines onto the ground, marking a safe area for pedestrians in close proximity to the vehicle.



# BUILT TO LAST

## ▶ EXCELLENT RELIABILITY

Bobcat 7-series PLUS electric forklifts are built tough to provide maximum uptime and dependability thanks to a reliable AC controller, dust & water-resistant parts, and an additional drive motor cover.

# THERE'S NO TIME FOR DOWNTIME. STAND UP TO EVERY TASK THAT COMES YOUR WAY. DAY AFTER DAY.



Reduced noise level at operator's ears

Curtis AC controllers are distinguished by their exceptional reliability and well-proven functionality

The drive and pump are dust and water-resistant with an IP43 rating for enclosed motors and an IP65 rating for sealed controllers.

The drive motor area is better protected with the addition of a front cover, while all electrical connectors are rated IP67

Centralized cooling fan significantly improves performance by reducing heat buildup and improving heat dissipation

Simply by connecting a laptop to the forklift, a technician can adjust all the parameters according to the operator's preferences



## ▶ EXTENSIVE DEALER NETWORK

You will receive the best after-sales service from your authorized local or national factory-trained dealer, backed by Bobcat's own customer service center. And Bobcat provides 100% parts inventory to insure any downtime is minimized. When you own a Bobcat forklift, our high quality, responsive customer support team comes with it.

## ▶ BOBCAT GENUINE PARTS

Quality components delivered to our dealers guarantee that all of our equipment is built to last, withstand the toughest conditions and provide reliable performance.

# MAIN SPECIFICATIONS

MAIN SPECIFICATION										
		B15T-7 PLUS	B18T-7 PLUS	B20T-7 PLUS	B16X-7 PLUS	B18X-7 PLUS	B20X-7 PLUS	B25X-7 PLUS	B30X-7 PLUS	B35X-7 PLUS
Classification		3 Wheel Electric			4 Wheel Electric			4 Wheel Electric		
Capacity	kg	1500	1750	2000	1600	1800	2000	2,500	3,000	3,500
Load centre	mm	500	500	500	500	500	500	500	500	500
Wheelbase	mm	1323	1423	1446	1495	1495	1495	1,589	1,734	1,750
Turning radius	mm	1515	1615	1648	1886	1886	1886	1,950	2,095	2,155
Load moment centre	mm	376	376	381	376	376	381	448	454	454
Travel speed	km/h	17/17	17/17	17/17	17/17	17/17	17/17	16/18	16/18	16/18
Lift speed	mm/s	400/600	400/600	400/600	400/600	400/600	400/600	480/600	420/600	380/600
Lowering speed	mm/s	500/450	500/450	500/450	500/450	500/450	500/450	490/460	490/460	500/460
Max. Gradeability(at 1.6km/h, Loaded)	%	26	25	24	26	25	24	25	22	20
Max. Drawbar pull(Loaded)	kgf	1300	1300	1300	1300	1300	1300	1,768	1,768	1,768
Right angle stacking aisle width : 1000 x 1200	mm	3216	3316	3354	3466	3466	3471	3,620	3,772	3,832
Right angle stacking aisle width : 800 x 1200	mm	3341	3441	3479	3662	3662	3667	3,799	3,950	4,010

Specification values quoted in this specification sheet have been rounded. Performance may vary depending on operating conditions. Products and specifications are subject to improvement and change without prior notice.



# STANDARD EQUIPMENT & OPTIONS

STANDARD EQUIPMENT & OPTIONS	
<b>SAFETY &amp; STABILITY</b>	
Easy entry grab bar	✓
Electro-magnetic automatic parking brake (EPB)	✓
Electric foot brake system (EFB)	✓
Mast sway & drive speed control	✓
LED lights	✓
Emergency stop switch	•
Auto tilt leveling	•
Fence light	•
Panoramic mirror	•
<b>GUARDIAN STABILITY SYSTEM (GSS)</b>	
OSS (Operator Sensing System)	✓
Neutral position for start	✓
Hill start assist	✓
Curve control speed	✓
Low battery warning alarm	✓
Seat belt indicator	✓
Mast lowering interlock & tilt lock (ISO 3691)	✓
Decrease of travel speed (up to 50%) when the mast is raised above the primary stage	✓
Forward tilt is reduced by 2° when the mast is raised above the primary stage	•
Alarm sounds when the mast is raised above the primary stage with the mast tilted more than 2°	•
<b>PRODUCTIVITY</b>	
Full AC system chassis	✓
Rounded design counterweight	✓
86° (BX)/ 90° (BT) Steering angle	✓
Hydraulic cushioned valve in freelif cylinder (FFL & FFT)	✓
Battery lift/roll in and out system	•
Cooling options : Fans & Fin type controller	•

STANDARD EQUIPMENT & OPTIONS	
<b>ERGONOMICS</b>	
Large entry step with anti-slip pattern	✓
Large & angled floor plate (leg room) with rubber cushion	✓
Rounded design battery hood cover	✓
Easy to read instrument panel	✓
Adjustable tilt steering column & easy grip (Ø 280 size) steering wheel	✓
Hydraulic control lever with direction switch	✓
Large cup holder, usb port & 12V electric jack, clip board	✓
Additional accessory bar	✓
Reduced noise level	✓
Fingertip	•
Rear grab bar with horn	•
Newly improved adjustable seats	•
Special height overhead guards	•
Mono pedal	•
Modular cabins	•
<b>RELIABILITY</b>	
Robust frame structure & strong structure overhead guard	✓
IP65 Rated Curtis controller	✓
IP43 Rated PAL enclosed type motors	✓
Improved cooling performance	✓
Controller cover	•
Belly plate	•
<b>SERVICEABILITY</b>	
Easy to access controller & motors room	✓
Wide open battery hood cover	✓
Durable heat-resisting (38"SQ) cables	✓
Tool-less side cover with air ventilation	✓
Easy View	✓

\*This list is based on factory data. Standard or optional can vary for specific countries.

- = option
- ✓ = standard
- = not available



# YOUR TRUSTED BUSINESS PARTNER

Your machine builds your business and reputation. Everything we put into Bobcat equipment is designed to make this possible. Strength, versatility, or agility, it's built around you.



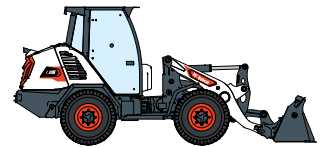
145 MACHINES / 46 PRODUCT FAMILIES / 1 TOUGH ANIMAL



SKID-STEER LOADERS



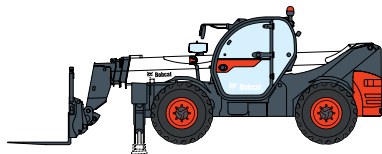
COMPACT TRACK LOADERS



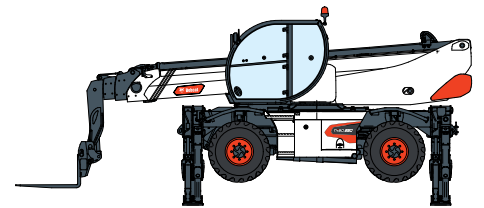
COMPACT WHEEL LOADERS



FORKLIFTS



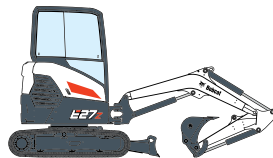
TELEHANDLERS



ROTARY TELEHANDLERS



LIGHT COMPACTION EQUIPMENT



COMPACT EXCAVATORS



COMPACT TRACTORS



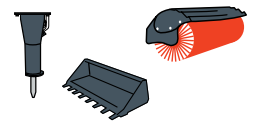
SMALL ARTICULATED LOADERS



MINI TRACK LOADER



MOWERS



ATTACHMENTS



**Bobcat**®